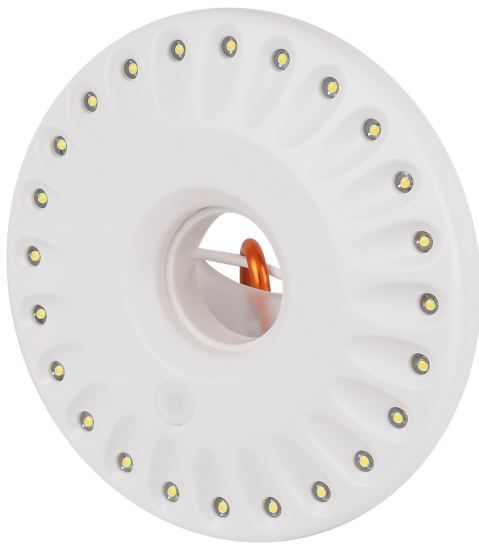


PRODUCT DATASHEET FLASHLIGHT CAMP CEILING

FLASHLIGHT CAMP CEILING | Outdoor mobiles



Areas of application

- Multifunctional

Product benefits

- Dimmable: max 400 lm
- 2 hours of running at full brightness
- 24 LEDs
- Strong magnets on the back: easy to install under the hood of the car; hanging in a closet or camping tent
- Powered by 3 AAA batteries (not included)

TECHNICAL DATA

Electrical data

Nominal wattage	1.20 W
-----------------	--------

Photometrical data

Luminous flux	120 lm
Color temperature	4000 K
Light color (designation)	Cool White
Color rendering index Ra	80

Dimensions & Weight

Diameter	120.00 mm
Height	20.50 mm
Product weight	67.00 g

Materials & Colors

Product color	White
Housing color	White
Body material	High Impact Polystyrene (HIPS)
Mercury content	0.0 mg

Application & Mounting

Ambient temperature range	-20...+40 °C
Type of protection	IP20
Dimmable	No
LED module replaceable	Not replaceable

Lifespan

Lifespan L70/B50 at 25 °C	30000 h ¹⁾
---------------------------	-----------------------

1) t[h]: L70 / B50 @ 25 °C (Ta), t[h]: L80 / B10 @ 25 °C (Ta), t[h]: L90 / B10 @ 25 °C (Ta)

LOGISTICAL DATA

Product code	Packaging unit (Pieces/Unit)	Dimensions (length x width x height)	Gross weight	Volume
4099854175664	Folding box 1	129 mm x 29 mm x 131 mm	93.00 g	0.49 dm ³
4099854175671	Shipping box 48	406 mm x 246 mm x 293 mm	4974.00 g	29.26 dm ³

The mentioned product code describes the smallest quantity unit which can be ordered. One shipping unit can contain one or more single products. When placing an order, for the quantity please enter single or multiples of a shipping unit.

DISCLAIMER

Subject to change without notice. Errors and omission excepted. Always make sure to use the most recent release.